

# Charlestown Township Newsletter

Winter 2024 Newsletter

[www.charlestown.pa.us](http://www.charlestown.pa.us)

Published by the Board of Supervisors

11 General Warren Blvd. Suite 1, Malvern, PA 19355 - (610) 240-0326

Township Hours: 9:00 a.m. – 3:00 p.m. Monday - Friday



## BOARD OF SUPERVISORS

Frank A. Piliero, Chairman  
Charles A. Philips, Vice Chair  
Kevin R. Kuhn, Member  
Hugh D. Willig, Member

## TOWNSHIP MANAGER

Christopher W. Heleniak

## MONTHLY MEETINGS

### Supervisors

1<sup>ST</sup> Monday @ 7:00 p.m.

### Environmental Advisory Committee

2<sup>nd</sup> Monday @ 7:00 p.m.

### Planning Commission

2<sup>nd</sup> Tuesday @ 7:00 p.m.

### Historical Commission

Semi-monthly meeting  
3<sup>rd</sup> Wednesday @ 1:00 p.m.

### Parks & Recreation

3<sup>rd</sup> Thursday @ 7:00 p.m.

Meetings are held at the Township office,  
11 General Warren Blvd. Suite 1, Malvern

## Township Acquires Swiss Pines & Surrounding Properties

On November 7, 2023, the Board of Supervisors attended a settlement for 9 contiguous parcels totaling 221 acres that include the former Swiss Pines Gardens.

Centrally located and bordered by Charlestown Road, Pickering Dam Road, State Road (Route 29), and the Pickering Creek, Swiss Pines provides us with a unique opportunity to preserve an ecologically sensitive and beautiful environment while providing an opportunity for visitors to enjoy once the grounds can be opened to the public.



*At Left: photo by J.C. Raulston, July 1976, Garden at Swiss Pines. Published with permission from the North Carolina State University, J.C. Raulston Arboretum.*

### Brief History of Swiss Pines

Founder Arnold Bartschi (1903-1996) purchased the 200+ acres of property from the Llewellyn estate in 1957 and over several decades developed approximately 17 acres of that site as Swiss Pines. The Gardens featured a Japanese tea house and garden, stone garden, statuary, streams, lake, stone

lanterns, and bridges set among naturalistic plantings. Plant collections include the Glendale Azalea Garden (150 varieties), an herb garden (100 species), a groundcover garden (28 varieties), and the pinetum (over 200 types of conifers).

The Bartschi Foundation was formed with a board of trustees to oversee the maintenance of the site. Following Bartschi's death, management and maintenance proved to be difficult and the garden was closed to visitors in 2013. Following Trustee Henriette Bumeder's passing in 2018, Trustees Bill and Kim Coyle and Jay Beaver looked toward a solution for the garden and some of the surrounding properties so they once again could become accessible to the public.

- continued on p. 2

### How the Township Became Involved

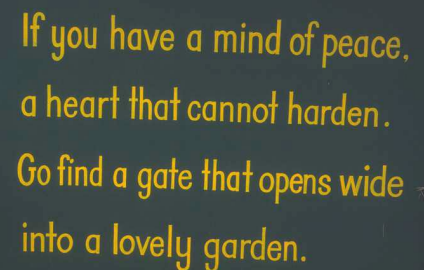
The Township began working with the current directors of the Foundation to obtain ownership of Swiss Pines, its surrounding properties, and their assets. In July 2022, the PA Attorney General filed a petition to transfer the Bartschi Foundation assets to the Township, and on July 27, 2023, the Chester County Court of Common Pleas, Orphan's Court Division approved a settlement agreement providing for the transfer of the 221-acre Swiss Pines property from its current owners, the Bartschi Foundation and Estate of Henriette Bumeder, to Charlestown Township. Settlement took place on November 7, 2023.

### Other Features of the Property

In addition to the former public area, there are a number of residences along the private roads Tree Lane and Bird Lane. Seven of the nine residences are presently under contract with tenants. Other structures include the Llewellen Mansion, a stable, garage, and barn. Assessments will be made as to which structures can be renovated or repaired, and which may need to be demolished.

### Future Plans for the Property

There is a great deal of planning and other work to be done before a portion of the property can be safely opened to the public. Please note that at present the facility is closed and there is no trespassing or hunting allowed on the property. First and foremost is the need for a safe entrance/exit and parking area. Assessments, surveys, and construction drawings must be developed for the existing structures and new improvements. The requirements for bidding and contracting of larger jobs will take additional time.



If you have a mind of peace,  
a heart that cannot harden.  
Go find a gate that opens wide  
into a lovely garden.

*Above right: photo by J.C. Raulston, July 1976, Garden at Swiss Pines. Published with permission from the North Carolina State University, J.C. Raulston Arboretum*

### Funding Improvements and Maintenance

Along with the transfer of properties, the Township received the funds held by the Bartschi Foundation. At some point, which is dependent on the extent of proposed improvements, the cost to cover future expenditures will need to be provided by grant funding and our Open Space Fund.

### Impact on other Open Space Projects

The Swiss Pines Acquisition should have no effect on our ongoing program to preserve open space. In addition to the funds that came to the Township at settlement, the Township is in a very healthy financial position and the 2024 Budget shows reserves of more than \$17.5M in our Open Space Fund.

### Exciting Opportunity:

We hope you, our residents, are pleased to learn of the tremendous potential we will harness at Swiss Pines. In the coming months, the Supervisors will confer with our planners to decide the next steps so we can successfully take on the challenge of re-opening a portion of the property to the public.

# CHARLESTOWN TOWNSHIP LOOKING TO FILL VACANT SUPERVISOR SEAT

The Board of Supervisors is seeking candidates to fill a vacant position on the Board of Supervisors. The vacancy was created by the resignation of Susan Bednar.

State law requires a replacement to be chosen by the 4 remaining Supervisors within 30 days of accepting a resignation. The Board intends to appoint a new member at their regularly scheduled meeting on Monday, March 4, 2024.

To be eligible to serve as a Supervisor, one must be a Township resident for a minimum of one year and be a registered voter. Supervisors' full terms are six years. While there are almost six years remaining in the vacant term, the appointee will serve upon appointment until the next municipal election in November 2025. Voters then will decide who will serve the remaining four years in the term.

All interested and qualified candidates should submit a letter of interest and resume to Township Manager Chris Heleniak at [c.heleniak@charlestown.pa.us](mailto:c.heleniak@charlestown.pa.us) by the end of business on Friday, February 9, 2024. Interviews will then be scheduled before the end of February.

## New Bird Nest Boxes

- by Pete Goodman, EAC member

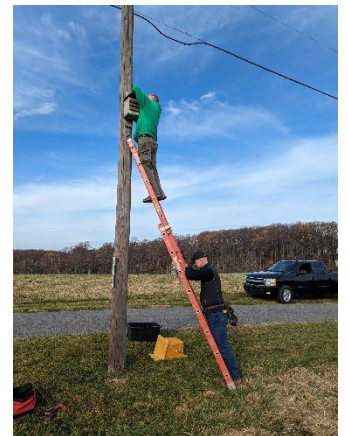
As you travel around Charlestown in the new year, you may notice some posts out in fields and meadows with strange structures mounted on them. These are the result of resident Andy Motel's vision, idea, and pursuit of a goal to get five Kestrel nest boxes and five Barn Owl nest boxes installed in the Township before Christmas 2023. Not only did Andy make several sojourns to Lancaster County to purchase materials and collect a donated box, but he also recruited builders to construct the boxes and additional hands to get them erected. He also singlehandedly spoke with each and every landowner and received their approval for the nest box installations. Following that, he toured the locations with Dan Mummert, the PA Game Commission biologist, to assure proper box location within the habitat.

*At left: Carter Walker, EAC member Dan Walker, and Planner Mike Allen with a newly installed owl box at Brightside Farm*



As of this writing, Andy and his crew, with the support of Bird Town PA and the Charlestown EAC, have installed 11 nest boxes across the Township (8-Kestrel & 3-Barn Owl). Each box bears a sign identifying it as the property of Charlestown Bird Town with an identifying number. We are very excited to see what the spring mating season will bring and what other grand ideas Andy might have up his sleeve!

*Left: Dan and Carter Walker with Pete Goodman at Kestrel Box  
Right: Andy Motel replacing a kestrel box at Brightside*





# SAVE THESE DATES!

# 2024

## CHARLESTOWN TOWNSHIP PARKS & RECREATION EVENT SCHEDULE

**APR 21** [NEW!] **SUNDAY BRUNCH SERVICE**  
11 AM-2 PM | CHARLESTOWN TOWNSHIP PARK

**APR 28** **WILD FLOWER WALK**  
10 AM | PICKER DAM CREEK TRAIL

**MAY 18** **SPRING TRAIL CLEANUP DAY**  
8 AM-11 AM | PICKERING DAM CREEK TRAIL

**MAY 19** **SUNDAY BRUNCH SERVICE**  
11 AM-2 PM | CHARLESTOWN TOWNSHIP PARK

**MAY 27** **MEMORIAL DAY SERVICE**  
10 AM-11 AM | OLD CHARLESTOWN CEMETERY

**JUN 13** **SUMMER CONCERT SERIES**  
7 PM-9 PM | CHARLESTOWN TOWNSHIP PARK OR BRIGHTSIDE FARM

**JUN 15** **BIRD WATCHING WALK**  
TBD | PICKERING DAM CREEK TRAIL

**JUN 16** **SUNDAY BRUNCH SERVICE**  
11 AM-2 PM | CHARLESTOWN TOWNSHIP PARK

**JUN 27** **SUMMER CONCERT SERIES**  
7 PM-9 PM | CHARLESTOWN TOWNSHIP PARK OR BRIGHTSIDE FARM

**JUL 11** **SUMMER CONCERT SERIES**  
7 PM-9PM | CHARLESTOWN TOWNSHIP PARK OR BRIGHTSIDE FARM

**JUL 25** **SUMMER CONCERT SERIES**  
7 PM-9PM | CHARLESTOWN TOWNSHIP PARK OR BRIGHTSIDE FARM

**AUG 8** **SUMMER CONCERT SERIES**  
7 PM-9PM | CHARLESTOWN TOWNSHIP PARK OR BRIGHTSIDE FARM

**AUG 22** **SUMMER CONCERT SERIES**  
7 PM-9PM | CHARLESTOWN TOWNSHIP PARK OR BRIGHTSIDE FARM

**SEP 28** **CHARLESTOWN DAY**  
11 AM-3PM | CHARLESTOWN TOWNSHIP PARK

**OCT 20** **SUNDAY BRUNCH SERVICE**  
11 AM-2 PM | CHARLESTOWN TOWNSHIP PARK

**NOV 21** **FALL TRAIL CLEANUP DAY**  
8 AM-11 AM | PICKERING DAM CREEK TRAIL

\*OUTDOOR EVENTS, LINEUPS  
& SCHEDULES ARE SUBJECT TO CHANGE  
FOR WEATHER & OTHER REASONS.

\*FOLLOW THE CHARLESTOWN PARKS &  
RECREATION FACEBOOK PAGE FOR  
EVENT DETAILS, UPDATES &  
ANNOUNCEMENTS.

\*EVENT SPONSORS & VENDORS WANTED!

\*PLEASE CONTACT MAKINLEE FOX  
(INFO@GOFOXONLINE.COM) FOR EVENT  
SPONSORSHIP & VENDING  
OPPORTUNITIES.





## HAPPY NEW YEAR! LET'S RESOLVE TO BE TRASH SMART

- Patti Lynn, Chester County Recycling Resources Manager

What does it mean to be Trash Smart? It means to be more thoughtful and engaged in how you manage solid waste in your everyday life. It is behavior. If you buy that new thing, what will you do with the old thing? How can you stop wasting food? What does “away” mean when we throw stuff away? This Trash Smart series will address different household waste streams, and today we start with recycling.

We make about 30,000 decisions in a day. If we consistently make the *right* decisions about recycling, then recycling *right* becomes a good habit, and your mind can focus on other decisions. **How can you recycle right?**

- First, go to your municipal resources or your private recycling hauler and print out the list of acceptable and unacceptable materials for recycling where you live. It may also include the collection schedule. **Post that list in a spot near your recycling container.** Don't know what to do with that plastic takeout box? Look at the list! Done!
- Yes, plastic is confusing. At least know that you should be recycling plastic bottles that have a neck (think water, milk, juice, detergent). It's the other plastic containers that give us a headache. **If in doubt, check it out. Not everything can be recycled!**
- **Universally NOT accepted** in your recycling bins: batteries, food waste, plastic bags, any hangers, wire, diapers, scrap metal. Look at your list! And throw away anything smaller than a credit card; this includes bottle caps.

**Why is it important?** Chester County is a scenic, diverse community of 534,000 people. Some benefits of our collective recycling efforts:

- Municipalities earned nearly \$1M from PA Recycling Performance grant awards in 2021.
- Our two local landfills, Lanchester and SECCRA, have more years to take your trash. More than 310,000 *tons* of recyclables were diverted in 2021.
- That's the equivalent of saving 33M gallons of gas.

**To sum it up,** get your local recycling list and post it up. Focus on what is acceptable. Empty, clean, dry, and loose materials (not bagged; but paper bags for paper are OK). And over and over again. It's not hard – it's Trash Smart!

Waste hauling in Charlestown Township is handled by private contract. If you live in a larger community that has a Homeowners' Association, in some cases your HOA secures the contract for waste hauling and recycling services for your entire development.

Haulers in Charlestown are required to recycle in accordance with Ordinance #220-2022.



## PRIVATE WELL WATER

Although over 90 percent of American households are serviced by the public water system, the United States Environmental Protection Agency (EPA) reports that about 23 million households rely on private wells for drinking water in the United States.<sup>1,2</sup> In Pennsylvania (PA), more than a quarter of adults rely on private wells as their primary source of drinking water.<sup>3</sup> Private water supplies may be obtained from ground water or aquifers or surface water sources, such as springs. Contamination from manmade or natural sources may pose a health risk to individuals bathing in, drinking, or cooking with private well water.

### HOW MAY THE QUALITY OF MY WELL WATER BE AFFECTED?

Contaminants in wells may negatively affect water quality and pose a threat to health. Well water may be contaminated by disease-causing bacteria such as *Cryptosporidium*, *Giardia lamblia*, and *Legionella*, other naturally occurring contaminants such as radon, or by manmade contaminants including per- and polyfluoroalkyl and other substances from industrial site leaks. Some contaminants such as arsenic, do not have a taste or smell but are highly toxic. Depending on the contaminant, drinking contaminated well water may cause gastrointestinal illness such as diarrhea, vomiting, and cramps. In severe cases, it can cause death. Furthermore, it is possible for skin reactions (i.e., rashes or itching) to occur due to bathing in the water or other skin contact.

### WHAT ARE THE ENVIRONMENTAL REGULATIONS FOR PRIVATE WELL WATER?

EPA does not regulate private wells, nor does it provide water quality standards for individual wells.<sup>4</sup> Additionally, PA is one of two states that does not have any statewide regulations for private well construction, maintenance, or water quality testing. Residents who rely on private well water are solely responsible for maintaining their water supplies, including having water quality testing completed on a regular basis.

### WHAT CAN I DO TO PROTECT MY WELL WATER AND ENSURE ITS QUALITY?

Although some groundwater contaminants are unavoidable, such as naturally occurring radon, it is possible to reduce contamination and protect your well water by taking some of the following actions:

- The [Centers for Disease Control and Prevention \(CDC\)](#) recommends testing your well annually for coliform bacteria, nitrates, total dissolved solids, pH levels, and other suspected contaminants.<sup>4,5</sup>
- Properly use, store, and dispose of substances such as petroleum products, degreasers, herbicides, pesticides, fertilizers, paint, and other pollutants. Do not dispose of these in septic tanks, dry, or abandoned wells.
- Make sure the well is designed, installed, and maintained properly, especially the well cap.
- Slope the area around the well to drain surface runoff away from the well and ensure there is enough distance between the wellhead and other possible sources of contamination, such as roads or septic system drain fields.
- Keep accurate records of well maintenance, and hire a certified well driller for any new well construction, modification, abandonment and closure, and consider installing a well water treatment system if a water quality issue persists.
- Periodically inspect exposed parts of the well for problems such as a cracked, corroded, or damaged well casing, a broken or missing well cap, or settling and cracking of surface seals.
- Regularly check the integrity of any storage tanks that hold home heating oil, diesel, or gasoline on your property.
- Pump and inspect [septic systems](#) as needed.<sup>6</sup> Also check with the Pennsylvania Department of Environmental Protection (DEP) or your local municipality to ensure activities and industry on or near your property are at a safe distance from your well.

### WHAT DO I DO IF MY WELL IS AFFECTED BY A FLOOD OR POWER OUTAGE?

Stay away from the well pump while flooded to avoid electric shock. To avoid illness, do not drink or wash from the flooded well. Get a well or pump contractor to clean and disinfect your well before turning on the pump. After the pump is turned back on, pump the well until the water runs clear to rid the well of flood water. If the water does not run clear or water testing shows evidence of contamination, seek advice from DEP or Penn State Extension.

If there is an interruption in your electric power supply, this may prevent your well pump from functioning. It is advised to have an alternate water source to ensure continuous supply of water or an alternate power source such as a gas or diesel-powered electricity.

**If you have any questions, contact us**

**Phone: 717.787.3350**

**Fax: 717.772.6975**

**Email: [env.health.concern@pa.gov](mailto:env.health.concern@pa.gov)**

generator to keep your well pump operating in an emergency.<sup>7</sup> It is also recommended that you store at least one gallon per day of fresh water for each member of your household for at least three days. Replenish these supplies every six months to keep the water fresh.<sup>7</sup>

### WHAT RESOURCES ARE AVAILABLE FOR MAINTENANCE OF MY WELL WATER?

Contact DEP, Penn State Extension, or a certified well driller for information on well maintenance and testing. You can also reach out to [a state certified laboratory](#) to conduct water testing.<sup>8</sup> Additionally, there are organizations such as [The Private Well Class](#) that offer free webinars and resources to aid proper maintenance of your private drinking water well.<sup>9</sup> The EPA's webpage, [Protect Your Home's Water](#) is another credible source for information.<sup>10</sup>

### WELL WATER TESTING

Some private well owners in PA are eligible to receive free limited water testing through Penn State Extension's Drinking Water Program thanks to funding provided by the CDC's Environmental Health Capacity program, in addition to the support of other outside funding sources. The goal of Penn State Extension's Drinking Water Program is to promote well water testing and to educate homeowners on its importance. Penn State's Agricultural Analytical Services Laboratory ([Ag Analytical Lab](#)) is accredited by the PA DEP for drinking water analysis and publishes water quality summaries by county based on tests conducted.<sup>11</sup>

For information on Penn State Extension's well water testing programs, how to collect and submit a water sample, and how to interpret water test results, please visit their [Drinking Water Program website](#).<sup>12</sup> You may also call 814-863-0841 or email [aaslab@psu.edu](mailto:aaslab@psu.edu) with your contact information.

In addition to regular water testing, wells should be tested when first drilled, if there is a sudden change in the smell, color, or taste of the water, and after a flood or septic tank failure. New homebuyers or renters may also want to test wells before moving into their new property. Common contaminants to test for include bacteria, nitrates, lead, and arsenic. You can reach out to your local Penn State Extension County Office for further guidance on specific testing recommendations.

### WELL OWNER EDUCATION

[The Private Well Class](#) offers online and in-person courses to help homeowners better understand the basic science of water wells and how to properly care for their well water to ensure that it remains safe to drink.<sup>9</sup> Enroll for classes at <https://privatewellclass.org/enroll>.

The [WellCare HOTLINE](#) is also another great resource which provides education to private well owners including information on choosing a filtration system and how to maintain your well.<sup>13</sup> Additional resources include: <https://extension.psu.edu/resources-for-water-well-spring-and-cistern-owners> and <https://www.watersystemscouncil.org/water-well-help/wellcare-info-sheets/>.

### Sources:

1. <https://www.epa.gov/privatewells>
2. <https://onlinelibrary.wiley.com/doi/full/10.1111/1752-1688.12937>
3. <https://www.phaim1.health.pa.gov/EDD/WebForms/BRFSSState.aspx>
4. <https://www.epa.gov/privatewells>
5. <https://www.cdc.gov/healthywater/drinking/private/wells/testing.html>
6. [https://www3.epa.gov/nepdes/pubs/homeowner\\_guide\\_long.pdf](https://www3.epa.gov/nepdes/pubs/homeowner_guide_long.pdf)
7. [https://www.watersystemscouncil.org/download/wellcare\\_information\\_sheets/maintaining\\_your\\_well\\_information\\_sheets/Power-Fails\\_FINAL.pdf](https://www.watersystemscouncil.org/download/wellcare_information_sheets/maintaining_your_well_information_sheets/Power-Fails_FINAL.pdf)
8. <https://www.epa.gov/dwlabcert/contact-information-certification-programs-and-certified-laboratories-drinking-water>
9. <https://privatewellclass.org/>
10. <https://www.epa.gov/privatewells/protect-your-homes-water#preventwellanchor>
11. <https://agsci.psu.edu/aasl/water-testing/drinking-water-testing/drinking-water-test-summaries>
12. <https://agsci.psu.edu/aasl/water-testing/drinking-water-testing>
13. <https://wellcarehotline.org/>
14. <https://www.ngwa.org/events-and-education/ngwa's-event-calendar>

# ***PennDOT to Begin Construction on Merlin Road Bridge Replacement in East Pikeland Township, Chester County***

*- Excerpt from PennDOT's 12/21/23 Press Release*



**King of Prussia, PA** – The Pennsylvania Department of Transportation (PennDOT) announced today that construction is scheduled to begin Tuesday, January 2, 2024, to replace the bridge carrying Merlin Road over Pigeon Run in East Pikeland Township, Chester County.

Motorists are advised of the following travel restriction:

- Tuesday, January 2, 2024, through Sunday, April 14, 2024, [Merlin Road will be closed and detoured 24/7 between Pikeland Road and Coldstream Road](#) in East Pikeland and Charlestown townships. During the closure, motorists will be directed to use Coldstream Road, Charlestown Road, Church Road, and Pikeland Road. Local access will be maintained for residents and businesses.

Motorists are advised to allow extra time when traveling through or near the work areas because backups and delays will occur. All scheduled activities are weather dependent.

Under this contract, PennDOT's contractor will replace the 24-foot-wide, 16-foot-long steel I-beam structure with a concrete box beam bridge that will measure 27 feet and 6.5 inches in width and 18 feet in length. The new bridge will allow for 10-foot-wide travel lanes and 2-foot-wide shoulders to improve traffic safety. Other improvements include new signage and roadway design features through pavement markings; milling and resurfacing; drainage; and guiderail replacements.

The existing bridge was built in 1908 and reconstructed in 1950. The structure is listed in poor condition, with severe corrosion, pitting, and rust. The bridge carries an average of 1,923 vehicles a day.

Lobar Site Development Corporation of Dillsburg, Pennsylvania, is the general contractor on the \$962,774 project which is financed with 100% state funds. The entire project is expected to be finished in fall 2024.

## ***Useful Contacts for your Reference***

*Pennsylvania State Police (610) 486-6280*

*PennDOT Maintenance for State Roads (484) 340-3200*

*County Real Estate Taxes: Chester County Treasurer (610) 344-6370*

*For Township & School District Real Estate Taxes: Keystone Collections (724) 978-0300*

*For Earned Income & Local Services Taxes: Keystone Collections (866) 539-1100*

*SPCA (610) 692-6113*



## Interested in Finding New Ways to Restore the Environment Right at Home?

- by Carol Armstrong, EAC Chair

These days *most* homes have had problems from too much water during storms. Stormwater also rushes off to the nearest stream, carrying the chemicals that go with modern human activities, and decreasing water quality as well as the habitats of fish, the insects they rely upon, and other aquatic life. These days, *all* home properties can do several things to decrease the amount of stormwater and contaminants running downhill to the next neighbor and on to the nearest stream. The healthiness of our drinking water is at stake, whether from a river or groundwater.

Ecological restoration should begin with attention to the most sensitive, high quality, and productive environments. That is, protect and conserve the best quality places before the *best* is lost. Success can be achieved by continuous improvement over time though full recovery requires substantial investment; the two restoration projects going on at Brightside Farm Park of the riparian woodlands and of the grasslands are examples of true ecosystem restoration that includes the habitats and diversity that native birds, fish, insects, flowers and grasses, trees, and other wildlife need. Yes, trees need healthy habitats to survive, and trees return the protection by sequestering massive amounts of carbon in their roots and in the soil where the carbon is used by life.



*At right: the riparian buffer at Brightside Farm Park*

Even if a homeowner cannot see a stream near their properties, each new driveway, lawn, patio, and building increases stormwater runoff, as the land is no longer able to absorb all the water and water cannot dilute all the contaminants. A program that helps residents to examine their practices and to increase awareness of how to contribute to healthy landscapes is the Watershed-Friendly PA Program. There are programs for everyone: Residents can apply for certification as a Watershed Friendly Property (see some signs already in Charlestown) in (1) the urban small lot or apartment property program, (2) the mid-sized property, or (3) the large-sized property. You can help by making the best decisions for your property and taking the free online Watershed-Friendly PA program.



## ***Tax Information for 2024***

**Real Estate Taxes:** The millage rate for real estate taxes is .75 (3/4) mills, unchanged for 18 years. Your real estate taxes for 2024 will be collected by the Keystone Collections Group. Tax bills are mailed the week of February 1<sup>st</sup> to the property owner's address of record. For questions, call 888-539-1100.

**Earned Income Tax and Local Services Tax:** Both are collected by the Keystone Collections Group. Charlestown Township's Earned Income Tax is 1% for residents. The rate for non-residents is ½%.

The **Local Services Tax** is \$52.00 per year, deducted by your Charlestown Township employer. Persons earning under \$12,000 per year are exempt from this tax.

Forms & instructions for EIT and LST taxes, including e-filing, can be found at: [www.keystonecollects.com](http://www.keystonecollects.com)

## ***Earned Income Tax Return Due April 17th***

The 2023 local earned income tax return filing deadline is approaching. E-filing is available through the Keystone Collections Group's website at:

[www.keystonecollects.com](http://www.keystonecollects.com)

**E-filing** is the easy, fast and secure way to file your 2023 tax return. You will need your W-2, your Social Security Number and any other income documents that may apply (such as a PA-UE or a Schedule C).

You can also access Frequently Asked Questions or email your questions 24/7 to [Taxpayer Support](#). Taxpayer Service Agents try to respond to all online inquiries within three business days.

Keystone's **Taxpayer Helpline** is available at 1-888-539-1100 to speak with a local, knowledgeable Taxpayer Service Agent.



# **New for 2024: ALL Township Taxes are collected by Keystone Collections.**

### **CHARLESTOWN TOWNSHIP 2023 ANNUAL REPORT**

#### **ACCOMPLISHMENTS & NOTABLE EVENTS**



*Published by the Board of Supervisors*

## ***2023 Annual Report Available Now***

The Board of Supervisors has published its 10<sup>th</sup> Annual Report outlining the accomplishments of the various boards, commissions, committees, and personnel for the previous year along with details and statistics about Charlestown.

The report is a summary of the municipal activity occurring in the Township during 2023. Its purpose is to highlight Township accomplishments and noteworthy events during the past year.

The full report is available to you on the Township Website or upon request to the Township Office. Visit [www.charlestown.pa.us](http://www.charlestown.pa.us)

## Invitation to Charlestown Residents to Serve on the Valley Forge Sewer Authority Board

Charlestown Township is seeking interested applicants for an unexpired 5-year term ending 12/31/2027 for the 6-member Board of Directors. This Board oversees the plant and operations, budget & finance, and service and expansion.

The VFSA Board meets on the second Monday of the month at 7:00 p.m. at the VFSA Administration Building, located at 333 Pawling Road, Phoenixville. Charlestown has two members on the Board of Directors.

### *About the Authority:*

*Incorporated as an operating Authority by Charlestown, East Pikeland and Schuylkill Townships in 1968, the Valley Forge Sewer Authority is a utility that is owned by its customers. Its business is to recycle wastewater into clean water for stream discharge and to produce a specialized fertilizer product utilized by area farmers.*

*The Authority owns and operates 90 miles of collection line, 9 pump stations and a regional treatment plant, serving approximately 22,000 customers in nine Chester County municipalities: Charlestown Township, East Pikeland Township, Schuylkill Township, Easttown Township, East Whiteland Township, Malvern Borough, Tredyffrin Township and Willistown Township. Recently, the area was extended to include a portion of West Vincent Township.*

*The Authority's treatment plant is situated on 54 secluded acres on the banks of the Schuylkill River near its confluence with Perkiomen Creek. The plant operates under permits issued by the Pennsylvania Department of Environmental Protection and the United States Environmental Protection Agency. For more information, visit [www.vfsa.com](http://www.vfsa.com)*

## 2024 Household Hazardous Waste Events – Schedule to be Available in March

Before our next newsletter is issued in April, it will be time to plan your visit to one of the 2024 hazardous waste events.



Charlestown Township plans to participate in the 2024 Chester County Hazardous Household Waste Event Program. The schedule is not yet available, but typically begins with dates in April and May. This service is for residential only – businesses and contractors will be turned away.

Plan now to bring unwanted hazardous household, automotive products, home maintenance, lawn and pest control products to the next Collection event. You must register online for an appointment time.

The schedule, when ready, will be posted on our website and will be available on the county's site here:

[Household Hazardous Waste | Chester County Solid Waste Authority, PA \(chestercountyswa.org\)](http://www.chestercountyswa.org/120/HHW-Collection-Material-List)

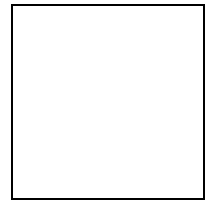
For a list of items Accepted and Not Accepted, go to:

<https://www.chestercountyswa.org/120/HHW-Collection-Material-List>



Latex Paint is Not Hazardous! It can be disposed of in your regular trash after being dried out.

**Charlestown Township**  
**11 General Warren Blvd. Suite 1**  
**Malvern, PA 19355**



### ***Charlestown Township Meeting Schedule 2024***

|   | <b>Jan</b> | <b>Feb</b> | <b>Mar</b> | <b>Apr</b> | <b>May</b> | <b>Jun</b> | <b>Jul</b> | <b>Aug</b> | <b>Sep</b> | <b>Oct</b> | <b>Nov</b> | <b>Dec</b> |
|---|------------|------------|------------|------------|------------|------------|------------|------------|------------|------------|------------|------------|
| <b>Board of Supervisors</b><br><b>1<sup>st</sup> Mon. 7:00 p.m.</b>                       | <b>2*</b>  | 5          | 4          | 1          | 6          | 3          | 1          | 5          | <b>3*</b>  | 7          | 4          | 2          |
| <b>Planning Commission</b><br><b>2<sup>nd</sup> Tues. 7:00 p.m.</b>                       | 9          | 13         | 12         | 9          | 14         | 11         | 9          | 13         | 10         | 8          | 12         | 10         |
| <b>Environmental Advisory</b><br><b>Committee 2<sup>nd</sup> Mon. 7:00</b><br><b>p.m.</b> | 8          | 12         | 11         | 8          | 13         | 10         | 8          | 12         | 9          | 14         | 11         | 9          |
| <b>Historical Commission</b><br><b>3<sup>rd</sup> Wed. 1:00 p.m.</b>                      | 17         | None       | 20         | None       | 15         | None       | 17         | None       | 18         | None       | 20         | None       |
| <b>Parks &amp; Recreation</b><br><b>3<sup>rd</sup> Thurs. 7:00 p.m.</b>                   | 18         | 15         | 21         | 18         | 16         | 20         | 18         | 15         | 19         | 17         | 21         | 19         |

\* Meeting to be held on a day other than the usual meeting day

Meeting dates, times and locations are subject to change. All meetings are advertised in the Daily Local News and posted on our website at [www.charlestown.pa.us](http://www.charlestown.pa.us)  
 Additional meetings are scheduled as needed. Call the Township Office if you'd like to confirm a particular meeting. (610) 240-0326.