

Brought to you by the Charlestown Environmental Advisory Committee (EAC)

October, 2020

[EAC@Charlestown.pa.us](mailto:EAC@Charlestown.pa.us)



## OUR MISSION

The Charlestown Environmental Advisory Committee's (EAC) mission is to advise the Board of Supervisors on environmental issues, the protection and preservation of natural resources, the use of open land and creating inventories of natural areas with unique features. All of the aforementioned advice to be focused within the township and in the best interest and general welfare of its residents.

## CALLING VOLUNTEERS



**We are looking for a few good people to join the Charlestown Environmental Advisory Committee (EAC).** We currently have a good working team of strong individuals with skills and abilities that have helped us advise and support the township on current issues facing Charlestown. We have a series of educational programs, and we have undertaken several projects that have expanded and protected Charlestown's natural resources. We also began *Nature News* this year, with EAC activities and invitations. If you are interested, please send your interest and name to [EAC@Charlestown.PA.US](mailto:EAC@Charlestown.PA.US). We are glad to answer your questions about what is involved in working on the EAC. The application form can be found at: [http://www.charlestown.pa.us/misc\\_docs/eac\\_application.pdf](http://www.charlestown.pa.us/misc_docs/eac_application.pdf)

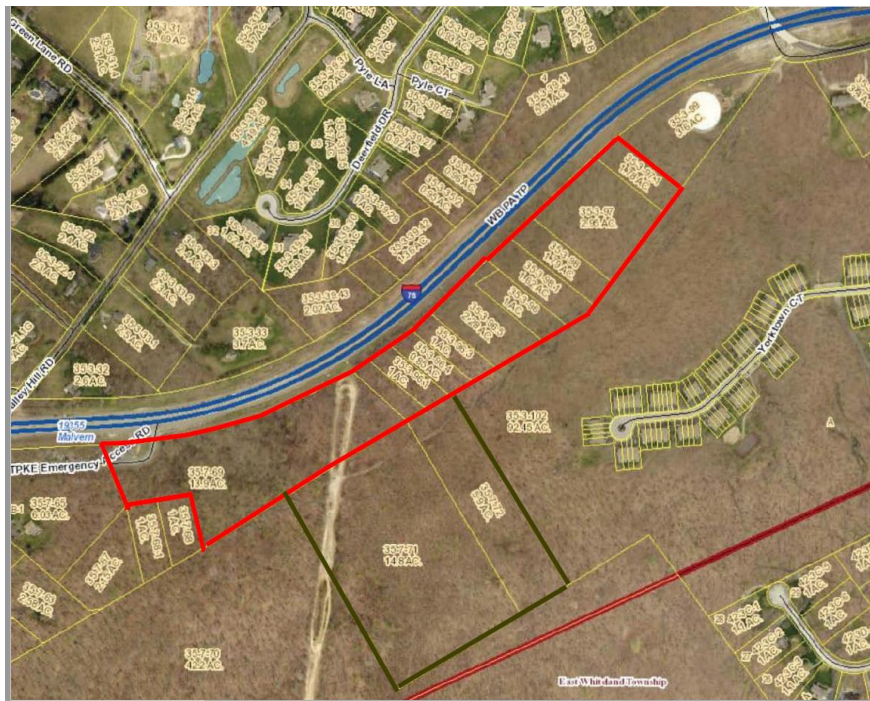
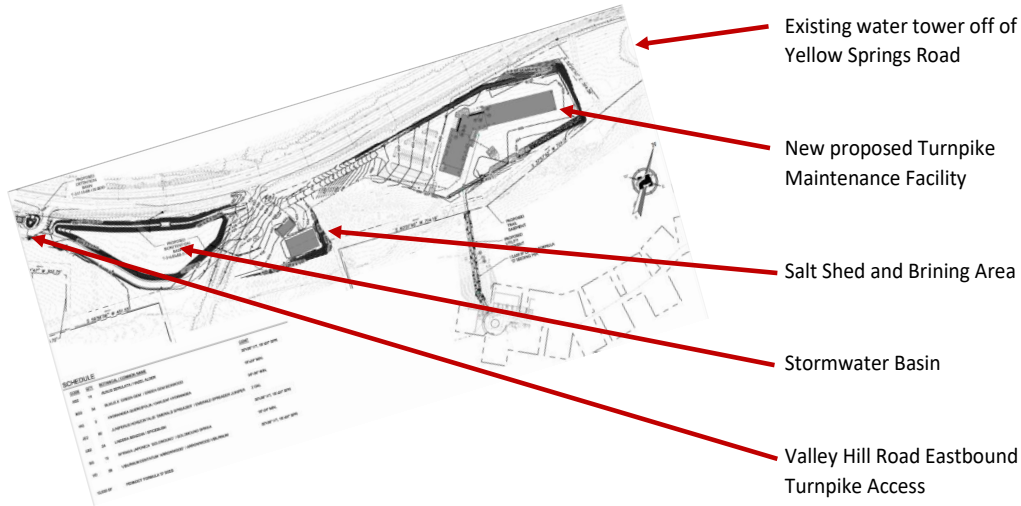
## HAPPENINGS

### Impact of Coronavirus

COVID-19 continues to dampen our attempts to get the community together to enjoy our beautiful township. We hope, in between raindrops, that you have gotten plenty of outdoor time this summer. As we enter a new season, more beauty unfolds with the trees turning colors and the cool crisp air of fall. It is still a great time to be outdoors as the future of community group activities remains uncertain.

## ALERT

The Pennsylvania Turnpike Commission (PTC) plans to build a new maintenance facility on several owned parcels of property that are zoned FR – Farm Residential, and not industrial. The parcels are located off of Yellow Springs Road between the Charlestown Oaks community and the Deerfield community. It will require cutting many mature trees growing in that area. This will be a 24x7 operation with large trucks going in and out, affecting noise and traffic. In addition, new lighting is planned that will be disruptive to homeowners and there will be impacts to our streams due to stormwater runoff. In spite of these things the PTC plans to move forward and trade a conservation easement for remediation for the trees lost. The additional burdens on area residents are not being considered as part of their plan. If you want your voice heard and/or want to understand more about the site, plan to attend the Charlestown Planning Commission on October 13<sup>th</sup> and/or Board of Supervisors meeting on October 5<sup>th</sup>. See <http://www.charlestown.pa.us/>. See diagrams on the next page for more details.



The area bounded in red is the proposed PTC development

*“October, the extravagant sister, has ordered an immense amount of the most gorgeous forest tapestry for her grand reception.”*

Oliver Wendell Holmes



Fall in Everhart Park, West Chester, PA.

### **Suggestion of the month**

Fall is the best time of year for composting plant material as well as planting new perennials. You can also harvest seeds from existing plants to use next spring. Consider planting bulbs that will bloom early in the spring. Don't cut back all of the dead material on existing plants as critical insects, birds, etc. use them all winter.